

With us you **Create**
your own Made in Italy concept

 **GIKOS**
ARCHITETTURE D'INGRESSO

Company Profile.



Culture



A resource of which our territory is rich, a source from which to draw fully to convey exclusivity to our products.



Innovation

It's the continuous improvement that allows us to guarantee the highest performance and the use of cutting-edge technology. In the processes and in the products.



Arsenalità



As the extraordinary model of the ancient Arsenal of Venice teaches us, a work of art is the result of a perfect industrial organization combined with quality craftsmanship work.



Oikos values

Design



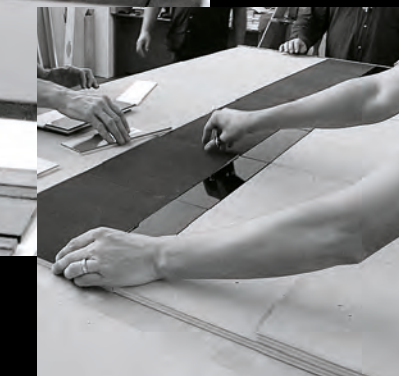
When the design meets the Italian creative genius and passionate craftsmanship, each product becomes unique.

Passion



This is the "secret ingredient" that we use every day in everything we do. It's our way of working. The only one we know.

Creativity



Our art, a Made in Italy distinctive sign. Creative turmoil and freedom of expression as origin of any creativeness.



Production workshop

The artisanal work becomes industrial.

Metalworking and welding become tangible examples of how technology and craftsmanship can join skillfully creating a product technically perfect and of noble quality.



Oikos craftsmanship



Carpentry

The heart of the artisan manufacture lives here its highest glory.

The covering panel is like a dress to wear. We are tailors who carefully take the measures, propose and approaching tissues making a made to measure suit. Thus our panel models itself, with different shapes from time to time, cleverly combined materials, tending to the research of the ideal beauty for each customer.



Assembly

One by one, piece by piece, each door gets its own identity.

Like long time ago, each component is assembled by hand with care and attention to detail and thanks to handling systems the heavy work is left to the automation while the accuracy is in the hands of the skilled and competent craftsmen.



An exhibition and meeting space created to enter the heart of Oikos philosophy, values and products.

“We like creating entrance spaces which become one with the architectures that surround them, but we have also created an exhibition space which tells the world who we are and what we do. Here it’s possible to see a selection of our products, to touch the materials we select for our works, to enter the heart of our Made in Italy reality. Moreover, for us the showroom is a place for sharing, discussing, learning and welcoming our clients, suppliers, universities and visitors to Oikos world. It’s a space where we meet people in order to create together special projects of entrance architectures: this is the reason why we call it No Limits.”

**Oikos
showroom**



Synua pivot door
5000 mm high, clad with a back-lit onyx panel, equipped with electronic opening system through Smartphone.

A set of values and a brand famous all over the world which becomes a way of being and doing.

These are the immaterial aspects, the evocative dimensions that communicate an identity, values and a style: It's Made In Italy, a brand well-known all over the world on which we are based and which we promote through our projects. A way of being and doing that we wanted to celebrate with a permanent exhibition "Design Tracks. The heritage of an Italian story" inside Oikos showroom: a collection of design icons, symbols of the Made in Italy style which communicate in the same space with Oikos products.



Made in Italy

Synua pivot door
3000mm high, clad with a marble look ceramic panel.
Golden long handle completely installed inside the panel.
Automatic opening through fingerprint reader.

Sciangai folding clothes stand,
Zanotta, Jonathan De Pas, Donato D'Urbino e Paolo Lomazzi designers.



Tekno door
with concealed hinges and Wall System, the vertical panels clad with a canaletto walnut finish.

Tekno door with double leaf
concealed hinges and Wall System, with a wood effect concrete finish. Electronic lock with card reader.

Radio TS 502, Brionvega,
Marco Zanuso, Richard Sapper designers.



Tekno door with double leaf
and concealed hinges, clad with a beige leather finish with matt black aluminium inserts. Coplanar handle.
Atollo Lamp, O-Luce,
Vico Magistretti designer.

Synua pivot door
3000mm high, clad with a glass panel screen-printed with an image of the Vitruvian Man.
Telefono S62 Bigrigio, Siemens, Lino Saltini designer.



Synua pivot door
5000mm high with minimal sidelights. Synua clad with a white lacquered glass panel with a motorized opening mechanism.
Vespa scooter, Piaggio,
Corradino D'Ascanio designer.

Pivot doors solutions applied on a Schüco curtain wall. Synua and Nova with coordinated finishes.



Nova glazed entrance door
3300mm high, with minimal
sidelights and "deep blue"
covering profiles. Automatic lock
with fingerprint reader.
Eclisse Lamp, Artemide,
Vico Magistretti designer.



**Adolf Loos
architect inspires
Oikos philosophy.**

Almost a century ago, in the early twenties, the Viennese architect Adolf Loos renovated its design approach to the theme of the house. The entrance area took a new importance and it began to be considered as a "middle earth", a rich spatial sequence which transfers the visitors from the outside dimension to the intimacy of the domestic environment. In this vision, the "middle earth" foretells what the guest will find inside the house, protecting the privacy of its inhabitants and the value of the architectural internal space. To Loos, as in the opinion of the Masters of 20th century, the entrance door was not a simple hole in the wall but one of the basic elements of the sequence: the meaning of its presence was revealed and made necessary by the architectural space. Oikos refers to Adolf Loos work in order to suggest a different, deeper approach to the concept of designing the entrance area proposing new customs and ways of living.

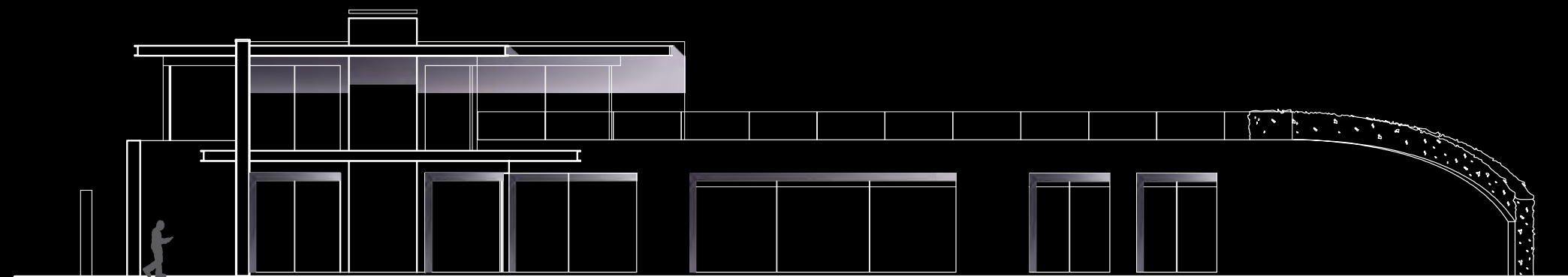
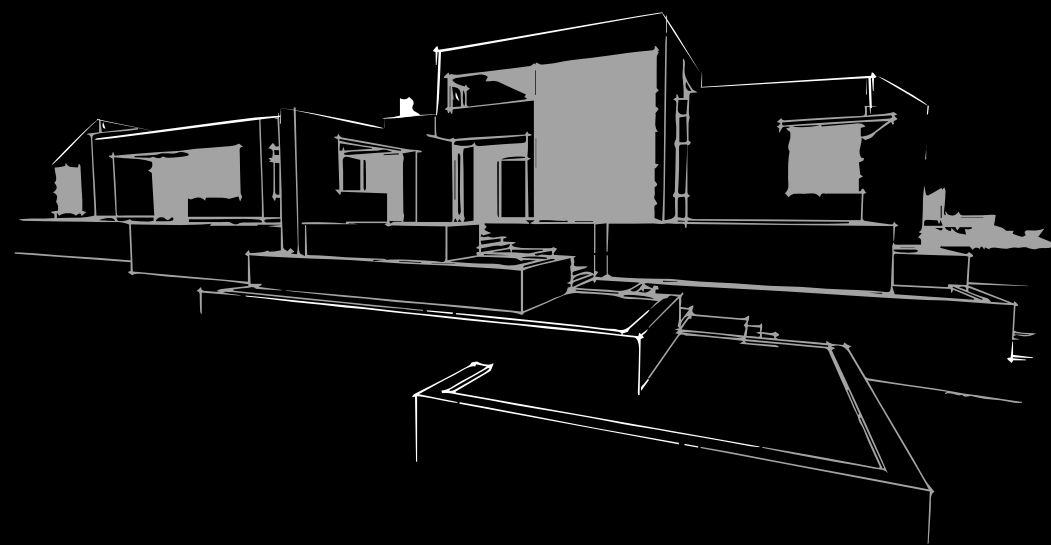
Edited by
Arch. Giorgio Giuliani
Arch. Lucio Piretti

**The entrance area
as a "Middle Earth"**

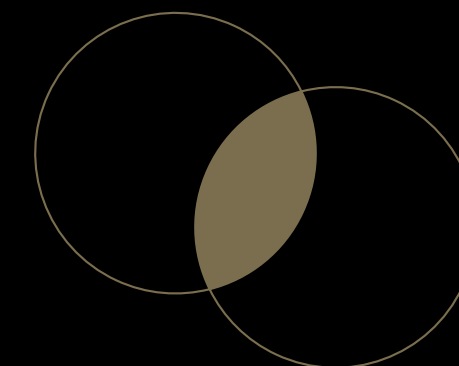


A limitless world
to explore in order
to create the perfect
entrance area.

The entrance area is interpreted as an integral part of an architecture and its surrounding environment: according to Oikos this concept translates into the words "entrance architectures". We create innovative shapes and solutions, looking for and applying materials and colors in line with the latest trends of décor, in order to make the entrance area a part of a wider whole. Exploring Oikos reality, its projects, believing in the company core values and creating through its infinite possibilities, means customizing by giving personality to the entrance architecture in order to complete the whole living context. It's not a simple philosophy, but an itinerary to do together that brings to the realization of true concrete projects. Our world has no limits, such as creativity.



Explore. Believe. Create.



"No Limits" is a world of
infinite possibilities.
It's our world and every day
we create it with you.



Verona, Italy
Private Villa



Verona, Italy
Private Villa





Verona, Italy
Private Villa
Nova entrance door provided
with automatic lock with
fingerprint and card reader
opening system.



Brescia, Italy
Private Villa
Tekno entrance door, concealed hinges, flush with the external wall and steel horizontal sector extended along the wall. A stone cladding for door and wall.



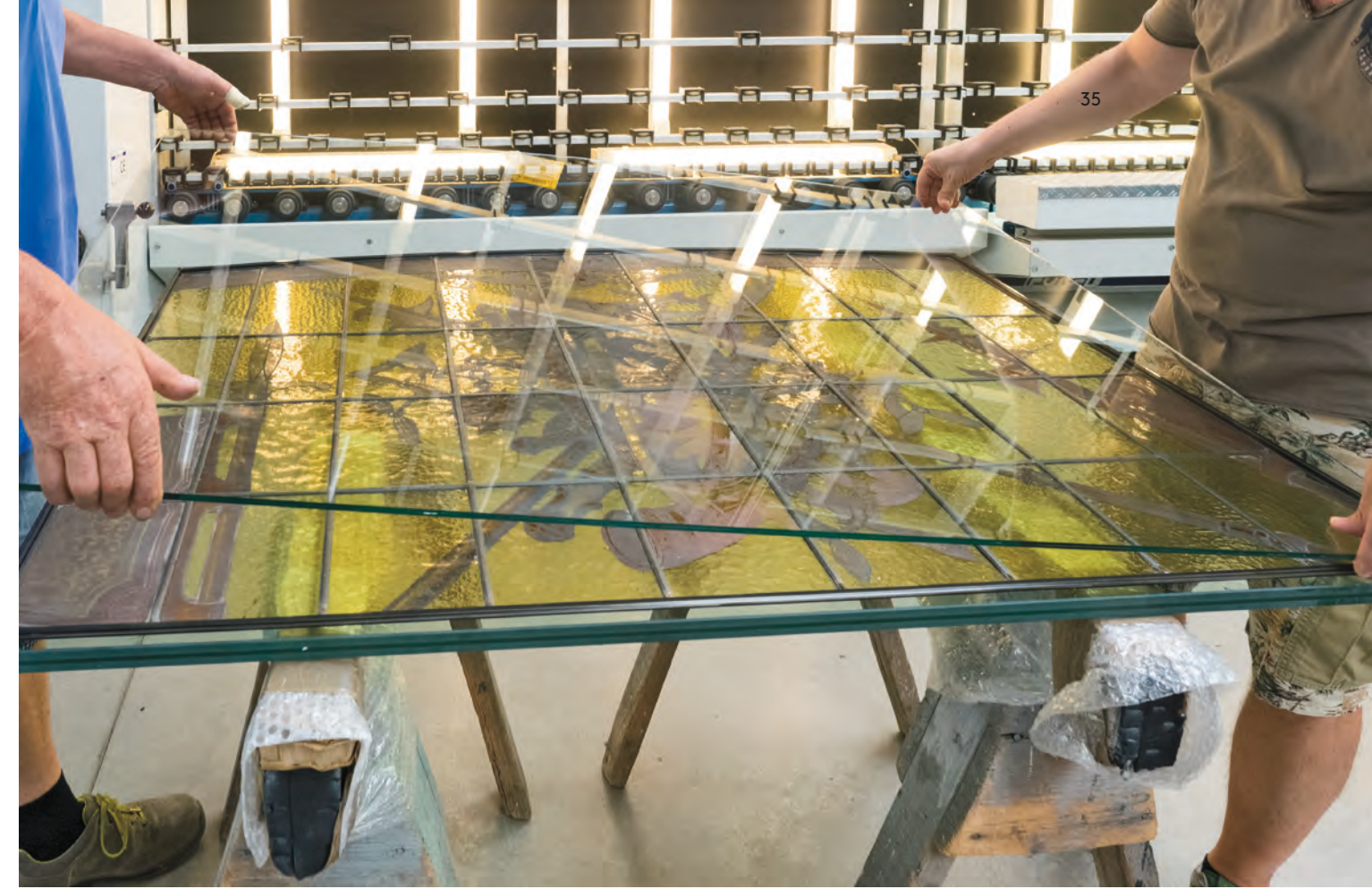
Caltanissetta, Italy
Private Villa
Synua entrance door with
a total white Corian cladding
and a long horizontal handle.



Picture: Eugeen Van Groeneweghe, Herman Van Hoey.



Ghent, Belgium
Flemish Castle
A complete reproduction of the original portal where the glasses decorated in the 14th century have been totally restored.



With an accurate and careful work the portal left its Belgian residence to travel to Italy, to Oikos headquarter, ready to be reproduced in all its glory.

Ghent, Belgium
Flemish Castle

The original glass of the portal has been restored and encased within a bullet-proof layer. An ancient material processed with modern technology in order to preserve authenticity and improve performance.



Treviso, Italy
Private Villa
A full-height Synua
entrance door with
a minimal sidelight
and a customized
sawed oak finish.





Bergamo, Italy
Furniture Showroom
Main entrance with Synua
door and panic long handle.
Laminam customized cladding.



Bergamo, Italy
Furniture Showroom
Synua door, flush with the
internal wall with a customized
cladding combined with
the boiserie.



Bergamo, Italy
Furniture Showroom
Project interior security door
with concealed hinges, flush
with the external wall, with
Laminam customized cladding.



Bergamo, Italy
Furniture Showroom
Synua entrance door flush
with the internal wall,
Arckey remote opening control.



Naples, Italy
Restaurant



Naples, Italy
Restaurant
Synua external door,
Snow Laminam cladding
and steel sectors.
Vertical long handle outside,
horizontal long handle inside.



Vicenza, Italy
Private Studio
Nova entrance door,
Arckey automatic lock
with fingerprint reader
opening mechanism.
Net hole opening 4500 mm.



Dubai, Jumeirah, Umm Al Sheif – UAE
Private Villa
Photo: Tushar Naik
Project: MMA PROJECTS SRL



Dubai, Jumeirah,
Umm Al Sheif - UAE
Private Villa

Synua entrance door integrated
into the glass façade.
Wall System installed along the
whole wall with
a customized finish.
Total height 7700 mm, net hole
opening height 2700 mm.



Treviso , Italy
Private Villa
Synua entrance door,
burnished brass external finish
and white lacquered inside.





Catania, Italy
Private Villa



Catania, Italy
Private Villa
Full-height Synua, automatic
opening through fingerprint
reader on the wall.
Single Corian cladding panel.





Cortina D'Ampezzo, Italy
Chalet
Project: OUTLINE STUDIO 74



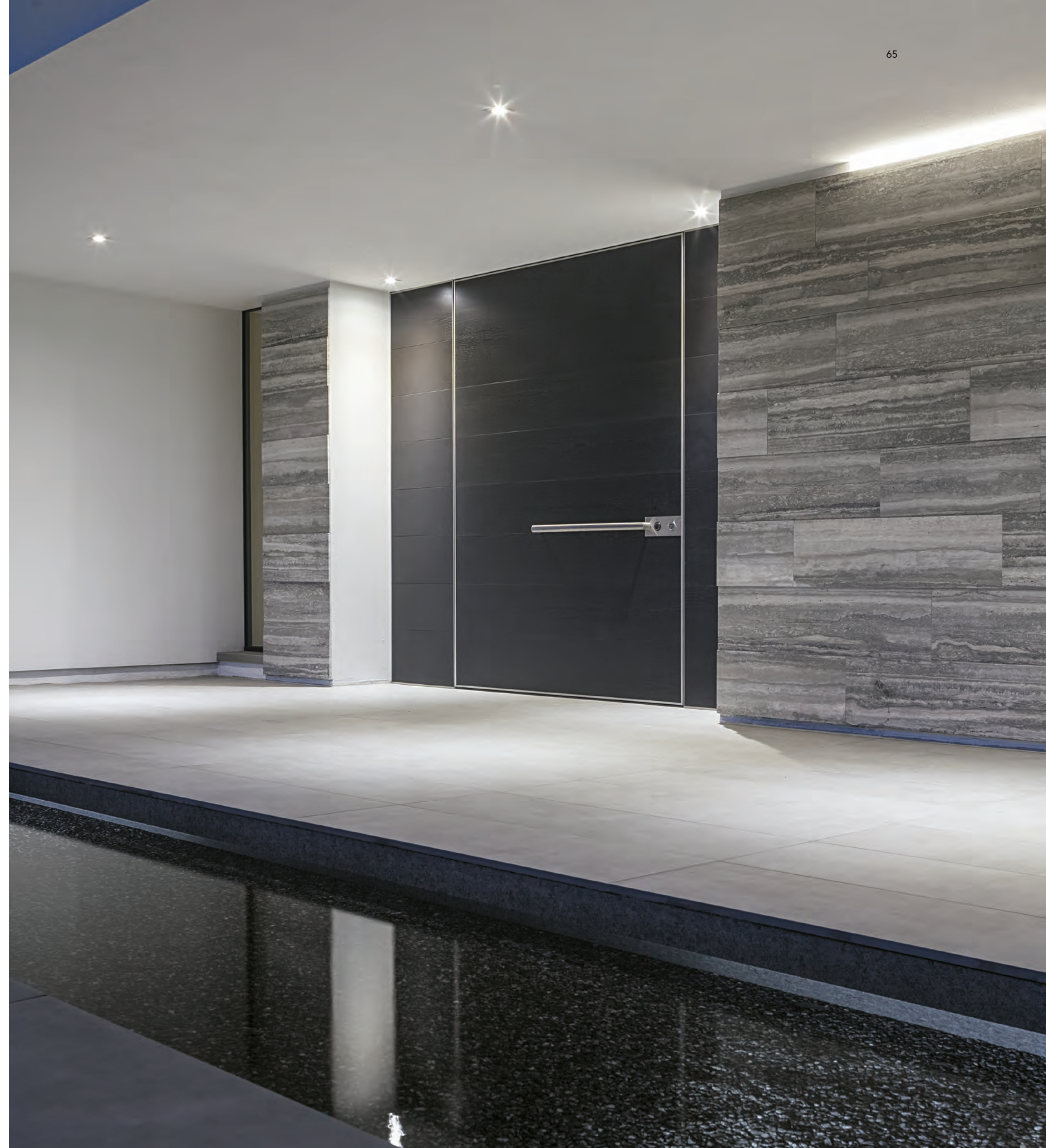


Cortina D'Ampezzo, Italy
Chalet
Nova entrance door, hole opening
sizes 2100 x 2300 mm.
Metropolitan black covering profiles.





Reggio Emilia, Italy
Private Villa
Project: MTA + Partners




Reggio Emilia, Italy
Private Villa
Synua entrance door with
Wengé Oak wood horizontal
sectors and horizontal long
handle, side external Wall
System.
Matt white lacquered single
panel and recessed handle for
the inside.





Dubai, Palm Jumeirah – UAE
Private Villa
Synua entrance door with
a black glass finish with bronze
sector and accessories.



A black and white photograph of a person standing on a dark, rocky ridge at night. The person is silhouetted against a bright, starry sky. The Milky Way galaxy is visible, stretching across the sky from the bottom center towards the top left. The person is looking up at the stars.

**"If you want something
you have never had,
you must be willing
to do something you
have never done."**

Design and build with us your entrance architecture.



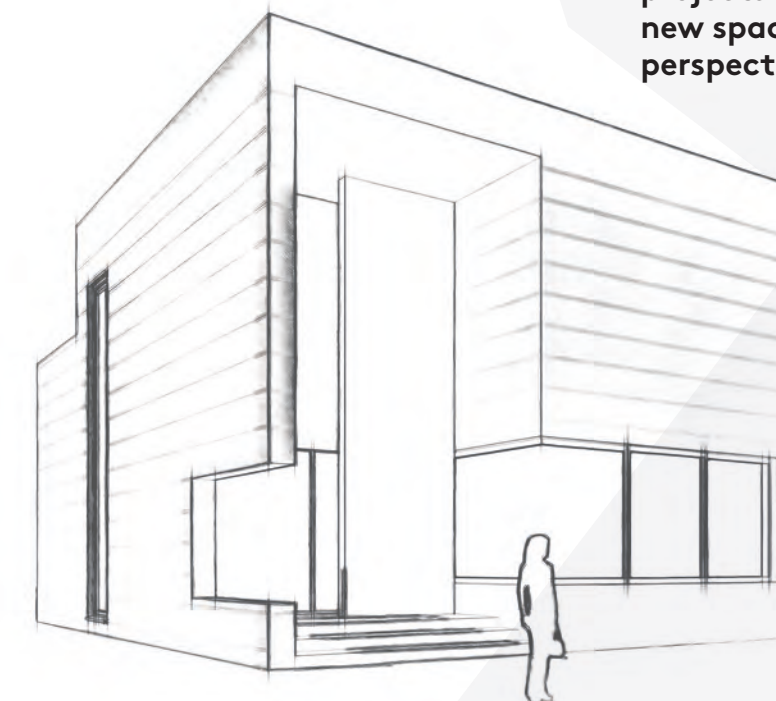
Going beyond the imagination, overcoming the limits imposed by the conventions, giving space to the creativity: only in this way we can design individual and customized projects in terms of dimensions, finishes and details. The experience, the know-how and the passion guide our minds and our hands giving birth to your idea of entrance architecture. Because a world without limits is a world that has to be invented.

Creating with Oikos



No Limits means also a great freedom in terms of sizes: design skill, performing pivoting opening mechanisms and cutting-edge technologies allow us to expand in height and width. Together we can go beyond the limits to achieve new goals, to show that everything is possible, to give an added value to every idea.

Large-scale projects open new spaces and perspectives.



A wide range of materials make your idea visible and tangible.

Exploring the world of materials means going deeply into its infinite possibilities: the naturalness of wood, the elegance of marble, the versatility of ceramic, the transparency of glass or the tactile effect of leather. Different types, colors and materials become the main characters of the entrance architectures and, in their specificity, they create a complete sensory experience, both from a visual and a tactile point of view.

High-quality materials



The importance of details in order to add style to the doors and integrated technologies at the service of security.



The long handle completely installed inside the panel creates a vertical band that extends from the floor to the ceiling. It's customizable with many finishes in order to match harmoniously with the whole entrance architecture. The automatic opening through fingerprint reader has a minimal aesthetics and functionality: being integrated into the door it does not require any key or magnetic cards but only the use of the finger.



Customized details



A vertical full-height long handle can be created from the burnished brass single panel. The electronic lock with number key pad integrates in the panel.



The coplanar handle, patented by Oikos is completely integrated into the door. It's available with different finishes being a design solution which combine functionality and aesthetics.



The door can be provided with electronic lock that can be opened through RFID reader and a magnetic card. An easy and efficient contactless technology which replacing the keys.

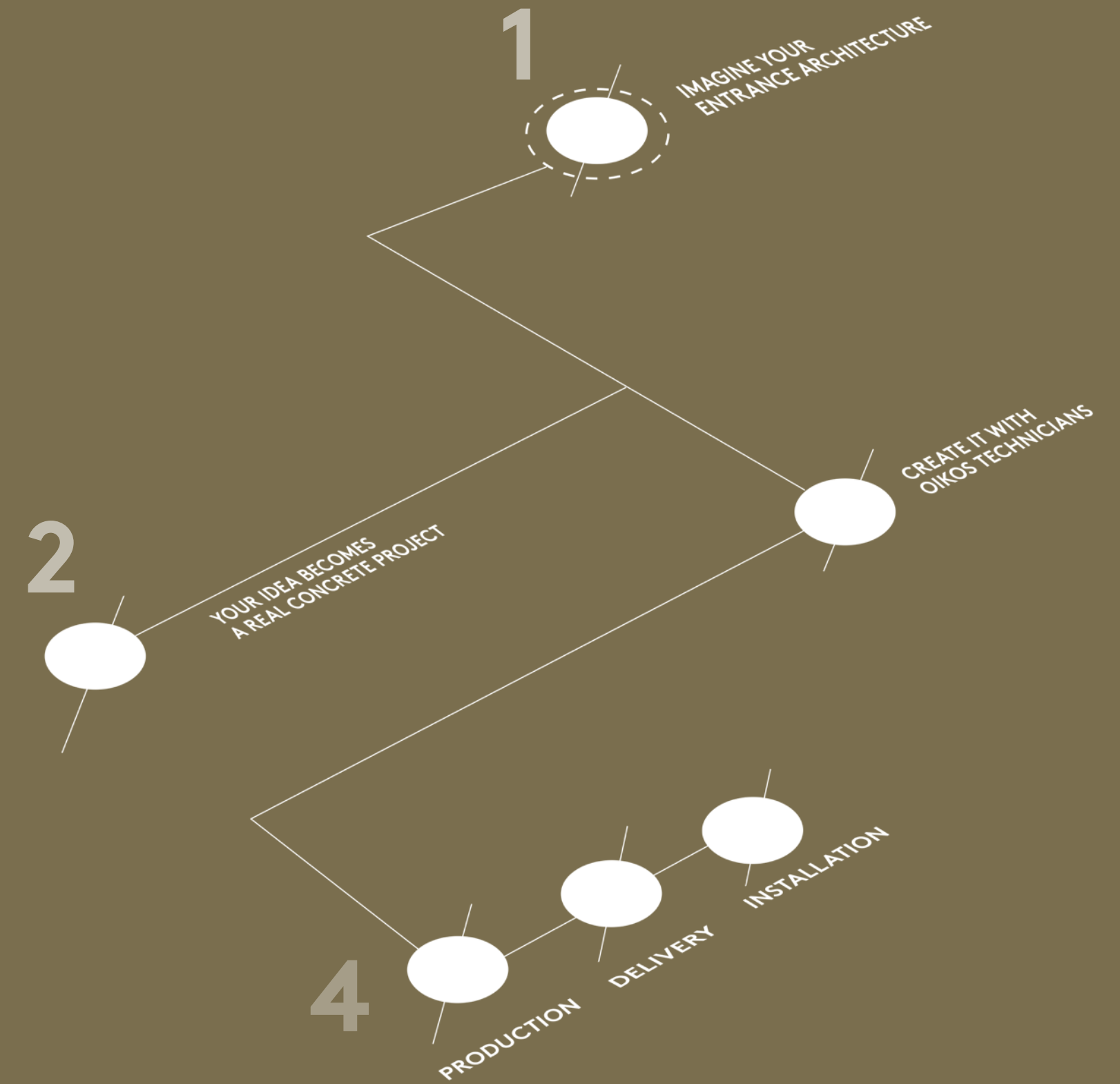
You create,
Oikos designs
and realizes
your entrance
architecture.

1/ Imagine your
entrance architecture.

2/ Our design office will take
in charge the whole production
phase, from the contact with the
suppliers to the resolution of
technical aspects.

3/ Communicate your needs
to our technicians who will turn your
idea into a concrete project.

4/ The production process is
completely internalized. Our trusted
partners, with our internal technicians
will take care of the installation.



The idea
becomes a project

With us you create your own Made in Italy concept.

Graphic design: AdvLokomotiv
Projects photos: Ikebeo Graphic Link
Showroom photos: Indoor srl
Colour separation: Z13
Print Grafiche Antiga spa
July 2019

OIKOS VENEZIA SRL
All reproduction and reprocessing rights are reserved.
Oikos Venezia srl reserves the right to perform changes, even without prior
notice and at any time, to the features of the products shown in this catalog.
Colors and grains are merely indicative.



Oikos Venezia srl - Via della Tecnica 6, 30020 Gruaro (VE) - Italy
T. (+39) 0421-7671 F. (+39) 0421-767222

oikos@oikos.it www.oikos.it